

# CREATING A MICROFICHE TAPE

SpoolOrganizer allows the user to make a tape which can be read by microfiche companies. The **FCHOUTQ** command will process all of the entries in the specified outq. Four user exit programs are called by SpoolOrganizer. Using the User Exit programs, the administrator can tailor the format of the tape created, and determine which spool entries within the outq are to be processed. The first **100** print lines are passed to one of the exit programs to assist the administrator. See "User Exit Programs" below for more information.

The **FCHOUTQ** Screen and Parameters:

```

                                Create Mfiche Tape from Outq (FCHOUTQ)

Type choices, press Enter.

OUTQ to place on tape . . . . . _____ Name
                                *LIBL      Name, *LIBL
Device . . . . . _____ Name
      + for more values _____
Volume Identifier . . . . . _____ Character value
      + for more values _____
Control Character . . . . . *NONE      *NONE, *FCFC, *PRTCTL

                                Bottom
F3=Exit  F4=Prompt  F5=Refresh  F12=Cancel  F13=How to use this display
F24=More keys
```

## OUTQ to Place on Tape (OUTQ) Parameter

Specifies the outq to be processed. All spool entries contained in the outq will be processed by the command.

## Device (DEV) Parameter

Specifies the tape device to use. Specify up to four devices. The **FCHOUTQ** command will allocate all devices prior to processing spool entries.

## Volume Identifier (VOL) Parameter

Specifies the volume ID to use. Specify up to five volume **IDs**, or **\*NONE**.

## Control Character (CTLCHAR) Parameter

Specifies the formatting of the data file created by SpoolOrganizer. See the **CTLCHAR** parameter on the **IBM CPYSPLF** command for more information.

**\*NONE:** No forms control characters are placed in the data.

# SPOOLORGANIZER/400™

\***FCFC**: The first character on each print line will direct forms control.

\***PRTCTL**: The skip to and space to values are provided at the beginning of each print line.

## *User Exit Programs*

Microfiche tapes are not standardized. Each microfiche company has different requirements concerning the format of the tape. Thus, SpoolOrganizer will allow the user to tailor the created tapes. The **FCHOUTQ** command will call four user written exit programs. The administrator must have programming skills to modify the user exit programs. *Broderick Data Systems* can provide customized exit programs for a fee. Working examples are provided in the source file **BSOSRC** in library **BRODERICK**. As shipped, the **FCHOUTQ** command will make a tape file for each spool entry in the outq. We recommend that the user make a copy of the supplied examples before making any changes. The sequence which the **FCHOUTQ** command calls the User exit program follows:

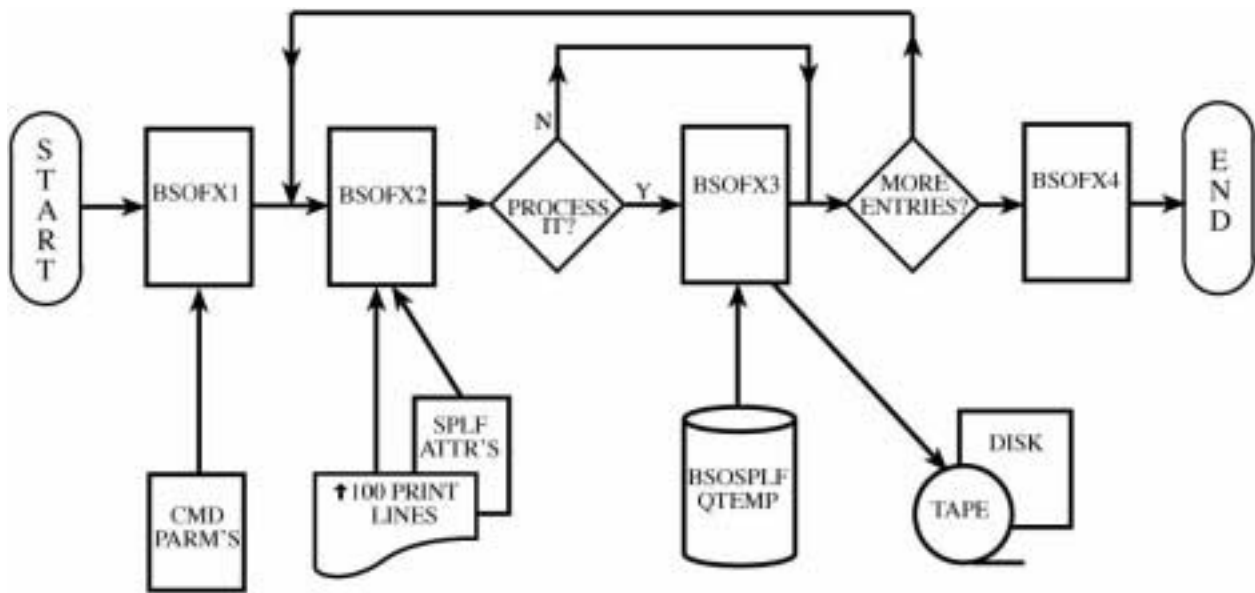


Figure 21-1: User Exit programs

The programs called are:

### **BSOFX1**

This program is called before processing any spool entries. It can be used to initialize any variables, or create any work files used by the other exit programs. The parameters passed to **BSOFX1** are:

Num	Len,Dec	Type	Description
-----	---------	------	-------------

# CREATING A MICROFICHE TAPE

1	256	Char	Command Input parameters
2	1024	Char	User data
3	1	Char	End Abnormally flag

Command input parameters are the parameters entered on the **FCHOUTQ** command:

Pos	Len,Dec	Type	Description
1	10	Char	Outq
11	10	Char	Outq Lib
21	44	Char	Device(s) separated by a blank
65	35	Char	Volume(s) separated by a blank
100	10	Char	<b>CTLCHAR</b> value. See the <b>IBM CPYSPLF</b> cmd for more information

User data is a variable which will be passed to all user exit programs. It is not modified by the **FCHOUTQ** command. It is used to pass information between the user exit programs.

The end abnormally flag allows the user to tell the **FCHOUTQ** command to end immediately. The **FCHOUTQ** command will issue the message **SPO-1000**, for which can be monitored. Specify "Y" to tell the **FCHOUTQ** command to end immediately.

## BSOFX2

This program is called before processing each spool entry. It is provided so that the user can inspect the spool file's data, and decide which if the entry is to be processed or skipped. The parameters passed to **BSOFX2** are:

Num	Len,Dec	Type	Description
1	4,0	Bin	Number of print lines passed
2	table		Print lines (see below)
3	5000	Char	Spool Entry Attributes
4	10	Char	User ID executing command
5	1024	Char	User Data
6	1	Char	Retrieve flag
7	1	Char	End Abnormally flag

The table of print lines is the spool entry's data passed to you in a table. Up to **100** print lines are passed. The format of each record is:

Pos	Len,Dec	Type	Description
1	4,0	Bin	Page Number
5	4,0	Bin	Line Number
9	256	Char	Print line

# SPOOLORGANIZER/400™

Spool entry attributes are described in source file **BSOSRC** in library **BRODERICK**, member **SPLFA2**.

User data is a variable which will be passed to all user exit programs. It is not modified by the **FCHOUTQ** command. It is used to pass information between the user exit programs.

Retrieve flag instructs the **FCHOUTQ** command to process or skip the spool entry. Specify **"Y"** to process the spool entry (produce a Data file **BSOSPLF** in **QTEMP** and call **BSOFX3**), or skip the spool entry and proceed to the next (do not call **BSOFX3**).

The end abnormally flag allows the user to tell the **FCHOUTQ** command to end immediately. The **FCHOUTQ** command will issue the message **SPO-1000**, which can be monitored. Specify **"Y"** to tell the **FCHOUTQ** command to end immediately.

## BSOFX3

This program is called to process each spool entry. It is the program which copies the spool entry to tape. **Please note** that it is only called if the process flag is set to **"Y"** in **BSOFX2**. The parameters passed to **BSOFX3** are:

Num	Len,Dec	Type	Description
1	5000	Char	Spool Entry Attributes
2	44	Char	Device(s) separated by a blank
3	35	Char	Volume ID(s) separated by a blank
4	10	Char	User ID executing the command
5	1024	Char	User Data
6	1	Char	Abend Flag

See above for a description of the passed parameters.

## BSOFX4

This program is called after all spool entries have been processed. For example, the user may need to place all spool entries in a single file label on the tape. In this example the user would copy the file **BSOSPLF** to their own work file in **BSOFX3** (adding records). Then the user would copy the work file to tape in **BSOFX4**. The parameters passed are:

Num	Len,Dec	Type	Description
1	1024	Char	User Data
2	1	Char	Abend Flag

See above for a description of the passed parameters.